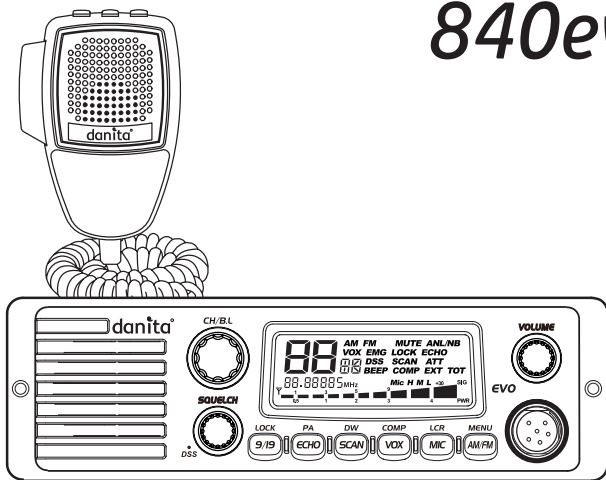


4W MOBILE
CB TRANSCEIVER
840evo

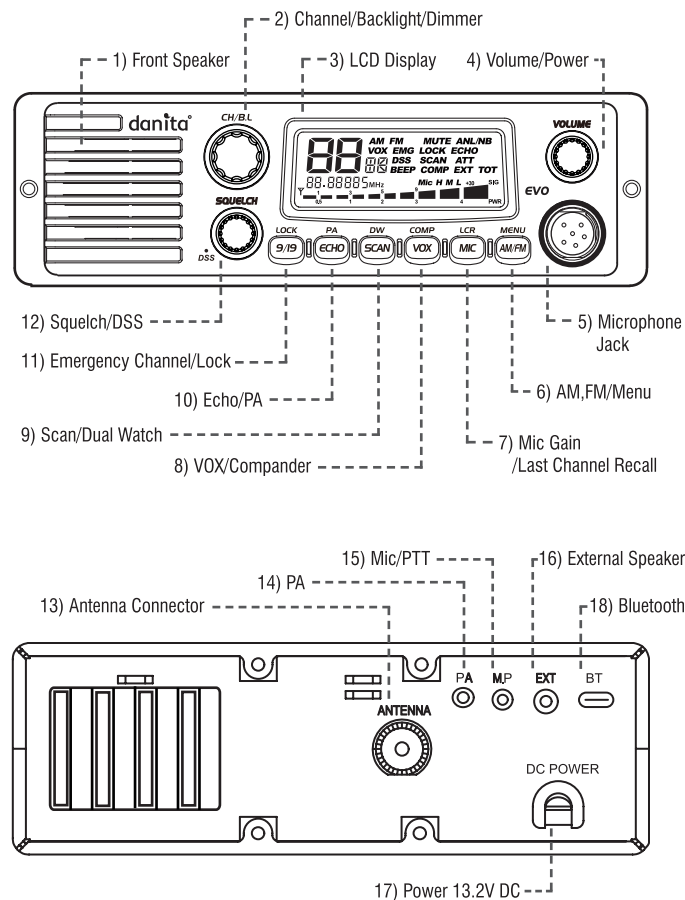


INSTRUCTION MANUAL

danita®
www.midtkom.dk

P/N 820-C110-D06

4. Transceiver Controls and Functions



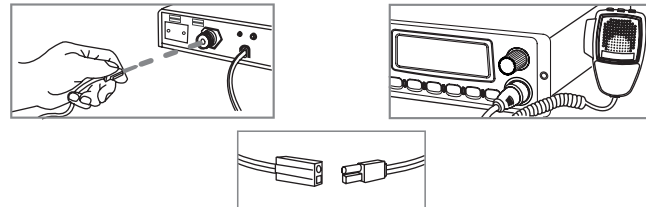
1. Supplied Accessories

Your transceiver is supplied with a full range of accessories to help you get started and virtually benefit from all the features straight away.

840evo Transceiver	1 unit
Microphone with cord	1 unit
Power cable	1 unit
Radio mounting bracket	1 unit
Radio mounting thumb screw with rubber washer	2 pieces
Mounting screw with washer (for transceiver bracket)	3 pieces
Mounting screw with washer (for microphone bracket)	2 pieces
Microphone mounting bracket	1 unit
DIN front plate	1 unit
DIN body plate	1 unit

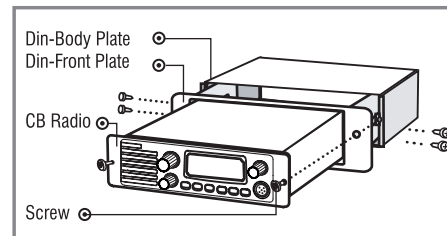
2. Installation

Normal Installation using Mounting Bracket



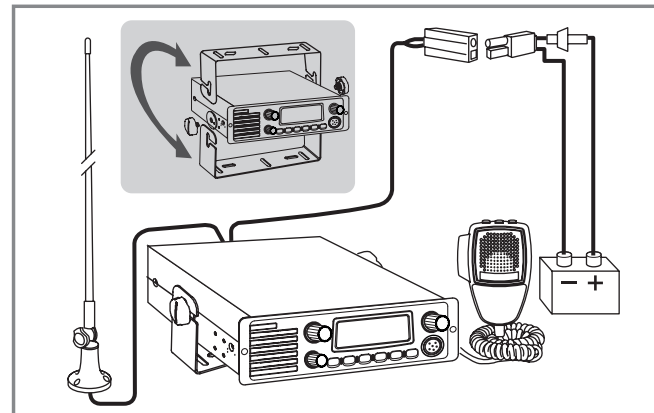
- Put the mounting bracket on the proper location where you are going to install.
- Drill holes and fix mounting bracket on the location.
- Connect the antenna cable plug to the standard receptacle on the transceiver, which is marked "ANT".
- Connect the power cable directly to the vehicle battery or fuse box of the car. Be careful to make sure of the polarity of the battery first and connect the cable.
(Red: Positive Pole(+), Black: Negative Pole(-)). The same colors are shown on the battery and in the fuse box of the car.)
- Connect the power cable to the transceiver cable.
- Mount the microphone bracket on one side of the transceiver, or near it using two screws included.
- Connect the microphone to the transceiver's microphone receptacle. Now you are ready to operate the transceiver.

Installing into Audio Compartment



- Install the Din-Body plate into the audio compartment (center fascia) of your vehicle. (Use the ready made locking flaps.)
- Set the transceiver in the Din-Front plate, and insert the transceiver in the Din-Body plate.
- Fix the screws through the transceiver, Din-Front plate and Din-Body plate.

Installing an Antenna



- Place the antenna as high as possible.
- The longer the antenna is, normally the better is the performance of the transceiver.
- Try to mount the antenna in the centre of the surface that you select.
- Make sure that you have a solid metal-to-metal ground connection.
- Be careful not to damage the cable during the installation.

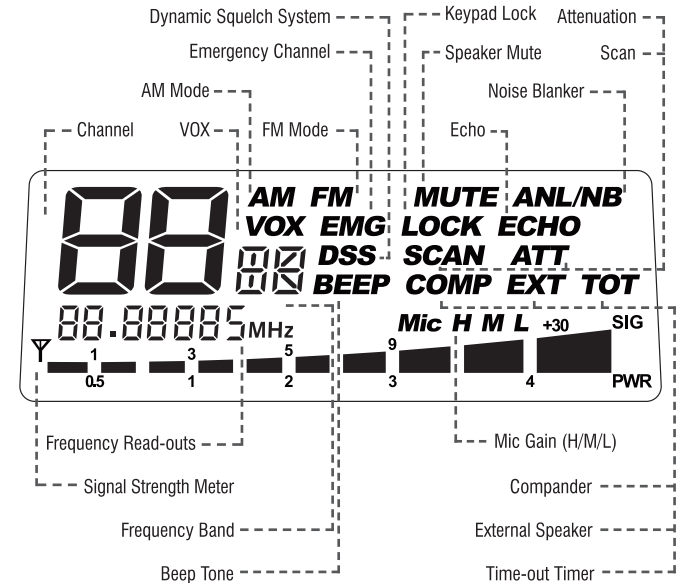
Warning : Never try the operation of your transceiver before connecting a proper antenna in order not to cause any damage.

<BAND Chart>

Setting	Display	Settings
EC	EC	Europe 40ch. FM 4W
EU	EU	Europe 40ch. AM/FM 4W
D	d	Germany 80ch. FM 4W, 40ch. AM 4W
I2	I2	Italy 34ch. AM/FM 4W
I	I	Italy 40ch. AM/FM 4W
UE(EU/UK)	UE	UK 40ch. FM 4W (British Frequencies) + CEPT 40ch. FM 4W(EC)
UK	UH	UK 40ch. FM 4W (British Frequencies)
PL	PL	Poland 40ch. AM/FM 4W (Polish Frequencies : 5KHz)
F	F	France 40ch. FM 4W, 40ch AM 4W
E	E	Spain 40ch. AM/FM 4W

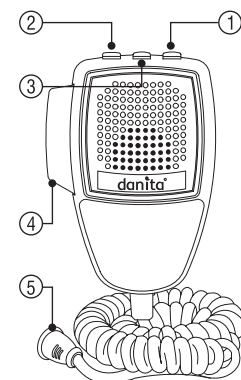
- Mic Gain / LCR Button
Short press to change the Mic Gain level to high (H), mid (M) and low (L) with the display indication. Long press to go to the Last Channel you have used.
- VOX / Compander Button
Short press to activate the VOX. Using the Mic gain the sensitivity can be adjusted. Long press to activate the embedded Compander function.
- Scan / Dual Watch Button
Short press to activate Scan function.
Long press to activate Dual Watch function. The current channel is the home channel and the secondary channel can be selected by the channel selection knob. The display blinks DW icon.
- Echo / PA Button
Short press to activate Echo voice.
Long press to use PA system. Please check your PA speaker is connected. (option)

3. LCD Display



- 9/19 / Lock Button
Short press to go to the emergency channel (9 or 19).
Long press to lock keypad. The volume, squelch and 9/19 buttons are still working.
- Squelch / DSS Knob
Manual Adjustment : Turn this knob counter-clockwise until you hear the background noise and then turn the knob a little clockwise until the noise disappears. In this way, you get the best receive sensitivity.
DSS : In FM mode turn the knob counter-clockwise until you hear the click. The squelch level of your transceiver is dynamically adjusted.
- Antenna Connector
- PA Jack
- Mic & PTT Jack
- External Speaker Jack
- Power 13.2V DC
- Bluetooth Dongle Connection

5. Microphone



- Up Button
- Down Button
- Mute / VOX Button
Mute : Momentary press the button to make mute the speaker.
VOX : Press long then VOX will be activated.
- PTT Button
- 6 Pin Microphone Connector

6. How to operate the Transceiver

- 1) Make sure the microphone is connected to the microphone jack.
- 2) Make sure the power cable is connected properly.
- 3) Make sure the antenna is connected to the antenna receptacle.
- 4) It is better to put the squelch control knob turned fully counter-clockwise.
- 5) Turn on the transceiver and control the volume level.
- 6) Adjust the squelch control knob to the optimum level.
- 7) Select your desired channel.
- 8) To transmit, press the PTT button and speak to the microphone.
- 9) Release the PTT button to receive.

7. Trouble shooting

If you experience problems with your 840evo transceiver, first check the power supply source. Poor connection of the power supply source can cause problems such as no transmission, no reception or poor reception, and weak or no sound. Ensure that the microphone and antenna are also well connected.

If this does not solve the problem, reset your transceiver as follows.

- 1) Switch off the transceiver.
- 2) Pressing “9/19” button and turn on the transceiver.

This will reset the transceiver, so all the memories are erased and the parameters return to the initial factory setting. This should fix most problems.
In case of further difficulty, please consult your dealer or visit our website.

8. CE Declaration

CE

CE versions of the 840evo which display the CE symbol on the product label, Comply with the essential requirements of the Radio Equipment Directive (RED) 2014/53/EU.
This warning symbol indicates that this equipment operates in non-harmonized frequency bands and/or maybe subject to licensing conditions in the country of use.
Be sure to check that you have the correct version of this radio or the correct programming of this radio, to comply with your national licensing requirements.

This unit can be used without license and charges in; Austria, Belgium, Bulgaria, Cyprus, Czech, Denmark, Estonia, Finland, France, Germany, Greece, Hungary, Iceland, Ireland, Italy, Latvia, Lithuania, Luxembourg, Malta, Netherlands, Norway, Poland, Portugal, Romania, Slovakia, Slovenia, Spain, Sweden, Switzerland, and U.K.

9. Safety Requirement

The power cable is for 13.2 / 24V DC only. Be sure the transceiver is off before connection the leads of the power cable to the power supply. It is important to observe the polarity even if the unit is protected against the accidental inversion :

- * Red : Positive pole (+)
- * Black : Negative pole (-)

The same colors are present on the battery and in the fuse box of the car.
The unit must be wired for the negative ground only. To avoid damage, do not operate your CB radio without connecting a proper antenna

10. Specifications

GENERAL	Channel	40 (See the frequency band chart)
	Frequency Range	26.56 MHz ~ 28 MHz
	Operating mode	F3E (FM), A3E (AM)
	Frequency Control	PLL Synthesizer
	Frequency Tolerance	0.002%
	Operating Temperature Range	-10 to +55℃
TRANSMITTER	Microphone	Plug-in Type
	Input Voltage	13.2 / 24V DC ± 15%
	Size	190 (W) x 175 (L) x 58 (H)
	Weight	892.7 g
	Antenna Connector	SO-239 type
	Power Output	Duty cycle 10% 4 Watts @ 13.8V DC
RECEIVER	Modulation	AM: from 85% to 95% FM: 1.8KHz ± 0.2KHz
	Frequency Response	300Hz to 3000Hz
	Output Impedance	50ohms, Unbalanced
	Harmonic Suppression	Less than -36dBm
	Current Drain	AM Full Mod. 1.6A Max.
	Receiving System	Dual conversion superheterodyne
	IF Frequencies	Double conversion 1st 10.695MHz/2nd 455KHz
	Sensitivity	0.7μV for 10dB(S+N)/N in AM Mode 0.7μV for 20dB SINAD in FM Mode
	Audio Output Power	2W @ 8ohm
	Audio Distortion	Less than 8% @ 1KHz
	Image Rejection	More than 60dB
	Adjacent Channel Rejection	More than 60dB
	Conducted Spurious	Less than -57dBm
	Frequency Response	300Hz to 2500Hz
	Built-in Speaker	8+ + + ohms, Round
	Squelch	Adjustable; Threshold less than 1μV DSS; Less than 2μV

* Specification is subject to change without prior notice.

11. Restrictions on the use

Country	Band				Use restrictions and other comments	
BELGIUM SWITZERLAND	EU	F		EC	40 Ch - 4W FM - Individual licence is required 40 Ch - 4W AM - Individual licence is required	
DENMARK,NORWAY LUXEMBOURG,CZECH				EC	40 Ch - 4W FM - Free use	
FINLAND,PORTUGAL FRANCE,NETHERLANDS	EU	F		EC	40 Ch - 4W FM - Free use 40 Ch - 4W AM - Free use	
GERMANY	D				80 Ch - 4W FM - Individual licence is required 40 Ch - 4W AM - Individual licence is required	
	EU				40 Ch - 4W AM - Use ch 4-15 only	
	D2			EC	40 Ch - 4W FM - Free use 12 Ch - 4W AM - Individual licence is required	
fx Allowed: from 26.960 to 27.410 MHz "BAPT 222 ZV 104"						
GREECE	E	EU	F	I	EC	40 Ch - 4W FM - Free use 40 Ch - 4W AM - Free use
T/R 20-02						
IRELAND	E	EU	F	I	EC	40 Ch - 4W FM - Free use 40 Ch - 4W AM - Free use
S.I. No 436 of 1998. WIRELESS TELEGRAPHY ACT, 1926 (SECTIONS) (EXEMPTION OF CITIZENS' BAND (CB) RADIOS) ORDER, 1998						
ITALY	E	EU	F	I	EC	40 Ch - 4W FM - General authorization is required 40 Ch - 4W AM - General authorization is required
				I2		34 Ch - 4W FM 34 Ch - 4W AM(ERP) *AM mode allowed on ch1-23 only
PNF issued on DM 08.07.02 NOTES 49 A-B-C-D-E-G						
SPAIN	E	EU	F		EC	40 Ch - 4W FM - Individual licence is required 40 Ch - 4W FM - Individual licence is required
Art. 57 - Law 11/1998 dated 24th April						
SWEDEN		EU	F		EC	40 Ch - 4W FM - Free use 40 Ch - 4W AM - Individual licence is required
UK	UK	EU			EC	40 Ch - 4W FM - Free use 40 Ch - 4W AM - Free use
POLAND	PL	EU			EC	40 Ch - 4W FM / AM - Free use

<< Declaration of Conformity >>

We, TTI Tech Co., Ltd. (#1312 361 Simindaero Dongan-gu Anyang-si Gyeonggi-do Korea) declare on our sole responsibility that this equipment complies with the essential requirements of the Radio Equipment Directive (RED) 2014/53/EU, and that any applicable Essential Test Suite measurements have been performed.

Kind of equipment : MOBILE CB TRANSCEIVER

Type-designation : 840evo

Version (where applicable) :

This compicance is based on conformity with the following standards, specifications or documents :	EN 62311:2008	
	EN 300 433	V2.1.1
	EN 301 489-1	V2.2.0
	EN 301 489-13	V1.2.1
	EN 60950-1:2006+A11:2009	+A1:2010+A12:2011+A2:2013



N. Y. Kim
Director

Korea, Sept. 10, 2021

Signature

<< Declaration of Identical Product >>

We, TTI Tech Co., Ltd. (#1312 361 Simindaero Dongan-gu Anyang-si Gyeonggi-do Korea) declare that we are the original manufacturer of the CB transceiver brand TTI and model TCB-1100, and we hereby declare that it is totally identical electronically and mechanically to the CB transceiver brand "Danita" and model "840evo".

The mentioned two CB transceiver are different only by their brand name and model name marking for their commercial reasons only.

N. Y. Kim
Director

Korea, Sept. 10, 2021

Signature